

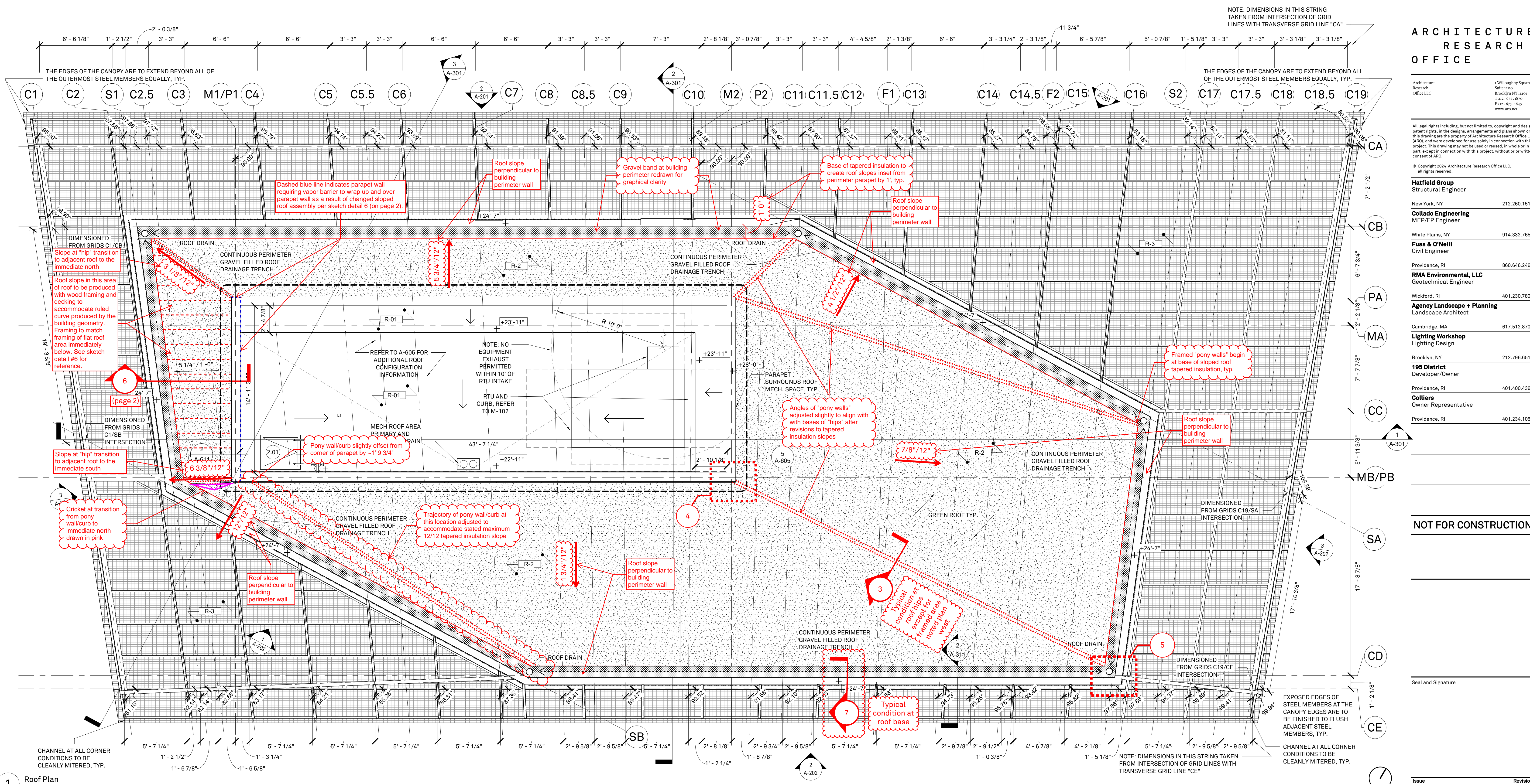
195 District Park Pavilion
RFP I19561 - General Contracting Services
Addendum 005
June 26, 2024

Potential respondents to RFP #I19561, General Contracting Services for the 195 District Park Pavilion, should note the following:

1. Proposals are now due on **Monday, June 1, 2024 at 2:00 PM**. All other submission requirements remain consistent with those in the RFP document.
2. The attached sketch, SK3.1, notes slight modifications to the roof pitch and clarifies several roof details. Proposers should incorporate these items into their pricing.

Attachments:

1. Bid SK3.1 by Architecture Research Office



1 Roof Plan
1/4" = 1'-0"

2 Roof Type 2 - Sloped Green Roof
3" = 1'-0"

3 Roof Hip Pony Wall Assembly
3" = 1'-0"

4 Green Roof Sketch Plan Detail 1
@ Mech Roof Parapet
NTS

5 Green Roof Sketch Plan Detail 2
@ Mech Roof Parapet
NTS

Green roof planting

4" Growing media

Anti-slip cleat

Drip tubing (if optional, provide as add-alt)

Slope-stabilization mesh

Capillary drainage mat

Root barrier

Roof type 1 assembly built-up to achieve roof slope

Green roof growth medium feathered to accommodate slope transitions at roof "hips", typ.

Roof type 2 assembly (see sketch detail #2 for reference). Built-in-place green roof assembly envelops pony wall assemblies, typ.

Roofing membrane laps over tops of pony walls, typ. Pony walls "capped" by second layer of roof membrane and heat welded to membranes of adjacent roofs to form tight corners.

Roof cover board. Cover board wraps pony walls, typ.

Vapor barrier as specified. Vapor barrier wraps pony walls, typ.

Framed and sheathed 2x4 "pony wall". Top of pony wall is proud of highest tapered insulation by +/-1"

Roof structure and deck as specified.

Roof mechanical space parapet assembly

Drawn roof slopes on roof plan are perpendicular to roof curb at base of roof, typ. UNO

Top of roof slope transition knee wall (see sketch detail #3 for reference). Knee wall assembly ties in to roof mechanical space parapet assembly. Top of knee wall +/- 3" below top of soil.

Line of perforated aluminum edge at base of planting medium separates planting medium from perimeter gravel course

Base of roof slope transition knee wall (see sketch detail #3 for reference), base of knee wall terminates at base of sloped green roof. Top of knee wall +/- 3" below top of soil.

"Flat" gravel perimeter drainage course. Slight slope toward roof drain leaders, typ.

Roof drain leader as specified. Gravel course surrounds roof drain leader, typ.

GENERAL NOTES:

- STRUCTURE AS RENDERED IN THIS ROOF PLAN IS SCHEMATIC. THE FOLLOWING FINISH CONDITIONS ARE TO BE ASSUMED:
 - STRUCTURAL CHANNELS AT ALL CANOPY CORNERS ARE TO BE CLEANLY MITERED, TYP.
 - EXPOSED EDGES OF STEEL MEMBERS AT CANOPY EDGES ARE TO BE FINISHED TO FLUSH ADJACENT STEEL MEMBERS, TYP.
 - THE EDGES OF THE CANOPY ARE TO EXTEND BEYOND THE OUTERMOST PERIMETER STEEL MEMBERS EQUALLY.
- CANOPY LIGHTING AND CONDUIT MOUNTED TO STRUCTURE ABOVE CANOPY SURFACE. SEE RCP SHEET A-110 FOR LIGHTING LAYOUT.
- SEE "LIGHTING RCP" SHEET A-705 FOR APPROXIMATE EXTENTS AND ROUTING OF EXTERIOR CANOPY STRUCTURE MOUNTED CONDUIT
- REFER TO SHEET P-101 FOR PLUMBING LAYOUT AND SPECIFICATIONS.
- REFER TO M-101 FOR MECHANICAL EQUIPMENT LAYOUT AND SPECIFICATIONS.
- REFER TO S-102 FOR ROOF OPENING STRUCTURAL CONFIGURATION.
- EQUIPMENT OTHER THAN THAT CAPTURED IN THIS DRAWING SET TO BE PROVIDED BY TENANT(S) AND INSTALLED BY TENANT(S) CONTRACTOR.

Architecture
Research
Office LLC

1 Willowhatch Square
Suite 1200
Brooklyn NY 11205
T 212.671.8750
F 212.671.8643
www.aro.net

All legal rights including, but not limited to, copyright and design patent rights, in the designs, arrangements and plans shown on this drawing are the property of Architecture Research Office LLC (ARO), and were developed for use solely in connection with this project. This drawing may not be used or reused, in whole or in part, except in connection with this project, without prior written consent of ARO.

© Copyright 2024 Architecture Research Office LLC.
All rights reserved.

Hatfield Group
Structural Engineer

New York, NY 212.260.1513

Collado Engineering
MEP/FP Engineer

White Plains, NY 914.332.7658

Fuss & O'Neill
Civil Engineer

Providence, RI 860.646.2469

RMA Environmental, LLC
Geotechnical Engineer

Wickford, RI 401.230.7805

Agency Landscape + Planning
Landscape Architect

Cambridge, MA 617.512.8702

Lighting Workshop
Lighting Design

Brooklyn, NY 212.796.6510

195 District
Developer/Owner

Providence, RI 401.400.4362

Colliers
Owner Representative

Providence, RI 401.234.1055

NOT FOR CONSTRUCTION

Seal and Signature

Issue	Revision
100% CD SET	04.12.2024
BID SET	05.15.2024

195 District Park
Pavilion

195 District Park
120 Peck St,
Providence, RI 02903

Drawing
Roof Plan

BID SK-3.1 P1

Project	2214
Drawn by	ARO
Date	4.12.2024
Scale	1/4" = 1'-0"
Sheet	

