

August 21, 2023

I-195 Redevelopment District

ADDENDUM NO. 001

Request for Proposals for the Development of Parcel 1A

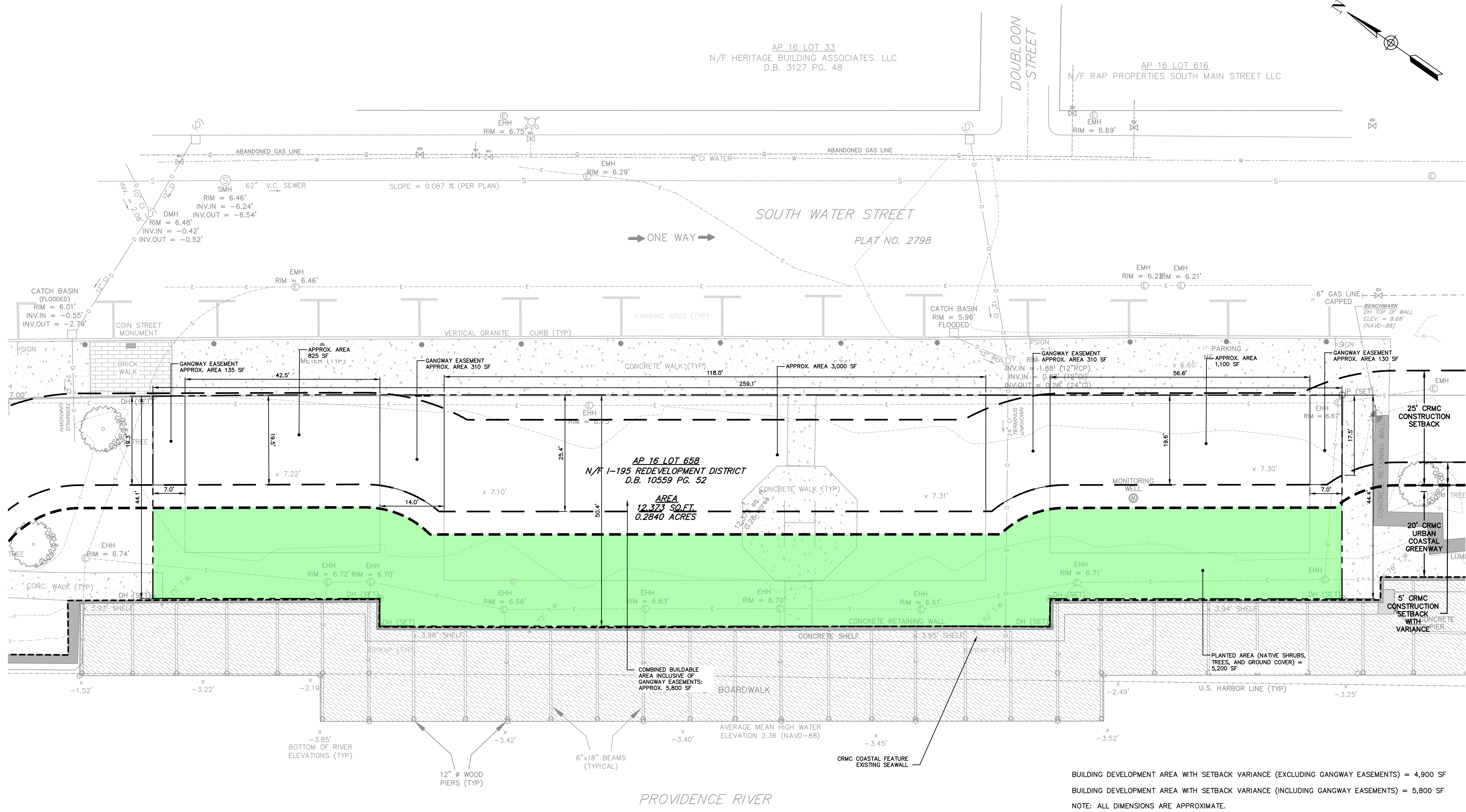
The I-195 Redevelopment District is soliciting a Request for Proposals (RFP) for the development of Parcel 1A.

Prospective Respondents and all concerned are hereby notified of the following changes in the Request for Proposals documents for the above-listed RFP. These changes shall be incorporated in and shall become an integral part of the RFP documents.

- 1. Attachment A clarifies how the Rhode Island Coastal Resources Management Council's (CRMC) standard position regarding how coastal features are measured affects the site and likely developable area.**

*****End of Addendum *****

ATTACHMENT A



File: J:\DWG\20080944\A50\Civil\Plan\Parcel 1A\20080944\A50_Concept.dwg Layout: 24X36-L Plotted: 2023-08-18 2:12 PM User: CFlannery
 PC3: AUTOCAD PDF (GENERAL DOCUMENTATION) PC3: STE/CTB: FO STB
 LAYER STATE:

No.	DATE	DESCRIPTION	DESIGNER	REVIEWER

SEAL

SEAL

SCALE:

HORIZ.: 1" = 10'

VERT.:

DATUM:

HORIZ.: NAD83

VERT.: NAVD88

GRAPHIC SCALE

FUSS & O'NEILL

317 IRON HORSE WAY, SUITE 204
 PROVIDENCE, RI 02908
 401.861.3070
 www.fando.com

I-195 REDEVELOPMENT DISTRICT

DEVELOPMENT GUIDANCE

I-195 PARCEL 1A

SOUTH WATER STREET PROVIDENCE, RHODE ISLAND

PROJ. No.: 20080944.A50
 DATE: AUGUST 2023

FIG 1